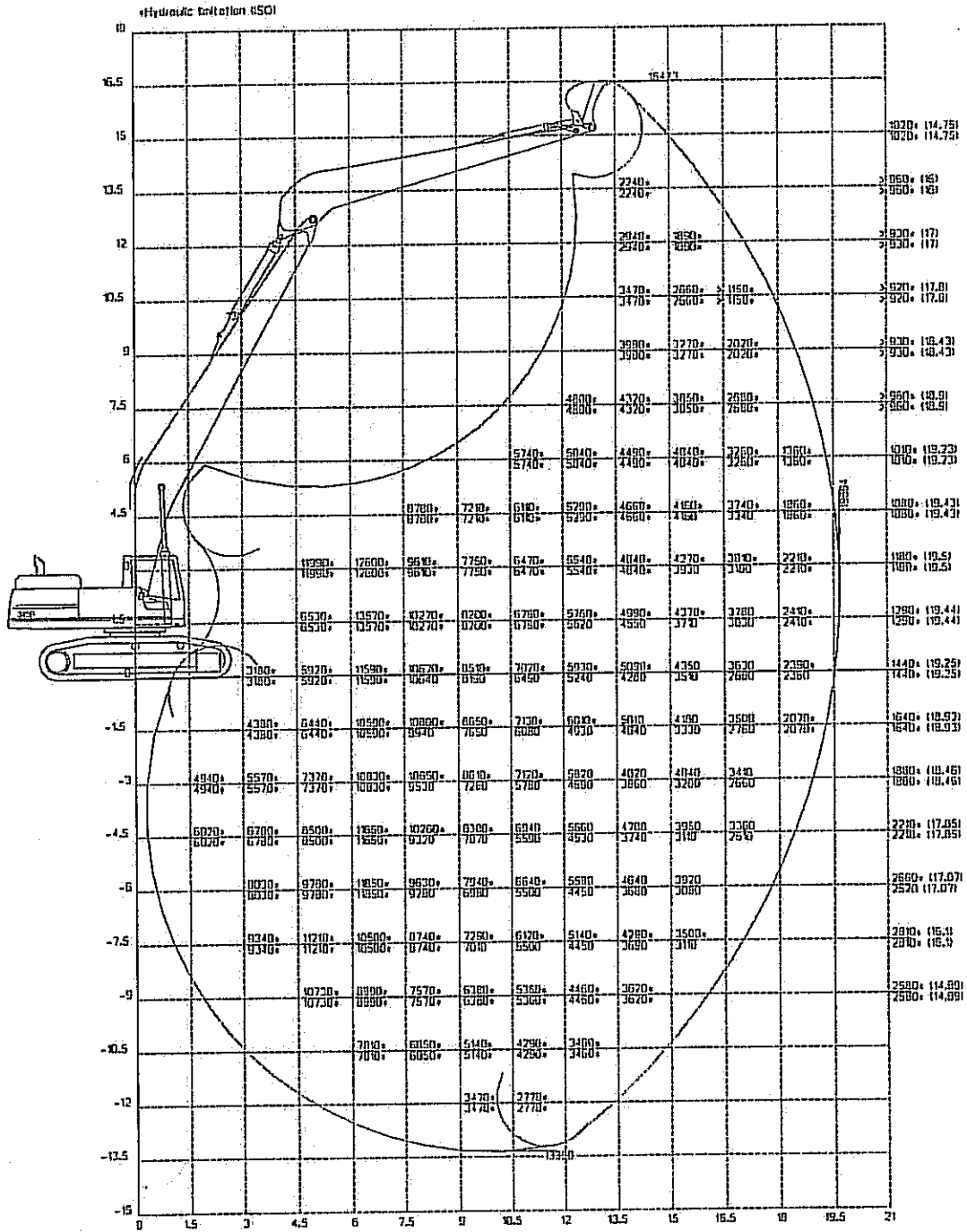


# 345B II LRE 19.6 m



02-05-2003 112645 CNEXPCW Data\Proj\345 B\ LRE\B45\W\RE\HSS02.Jas

- 345B II 345B STICK CYLINDER (190mm BORE)
- B FAMILY BUCKET CYLINDER (120mm BORE)
- B FAMILY BUCKET LINKAGE
- B FAMILY EXCAVATION BKT (0051 - 1500mm WIDE (L35m3) - 066kg)
- 345B SP MISCELLANEOUS DATA BLOCK
- 345B008 WIDE UNDERCARRIAGE
- 345B010 CEMDINCH HEAVY DUTY UPPER C/W/IN
- 345B018 LONG REACH EXCAVATION BOOM 11.5m
- 345B019 LONG REACH EXCAVATION STICK 0.25m
- 345B018 BOOM CYLINDER (for W/LRE\B45\W\RE\HSS02) (170mm BORE)
- GENERIC DATA FOR LRE
- Pressure Unit : WORK

Machine Weight : 8220L5