



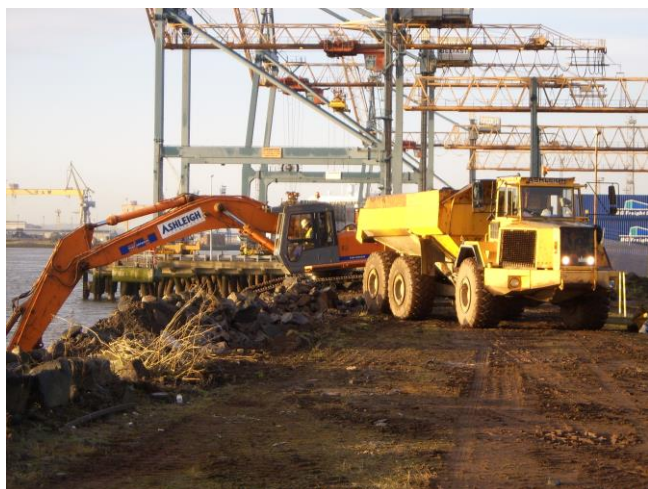
Victoria Terminal 4, Belfast (New Stena Berth)

Contract Value: £125,000
Consulting Engineer: Doran Consulting
Engineer's Representative: Campbell Davis (028 9038 1321)
Client: McLaughlin & Harvey Ltd
Client's Representative: John Glass (028 9034 2777)
Works completed: April 2008

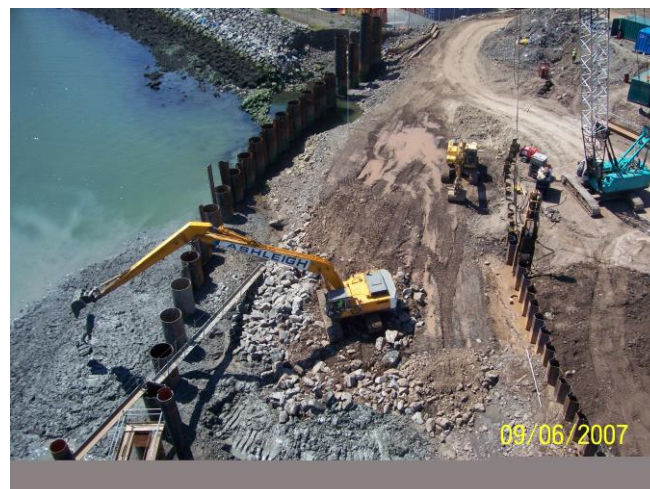
Categories:- Coastal Defences, Marine Civil Engineering, General Civil Engineering, Dredging.

Works Comprise:

- Stripping and stockpiling for re-use in the works of approx. 400 linear m of armour protection prior to piling and infilling works.
- Long Reach excavators used to excavate obstructions ahead of Combination Wall and Anchor Wall piling.
- Removal of sleech during general infilling works on sections of reclaimed land on Ro Ro and HSS Berths.
- Rock Armour protection to Ro Ro Berth Bankseat
- Rock Armour scour protection to seabed along HSS / Ro Ro Berth interface.
- General Plant Hire including Long Reach and standard excavator, dumprucks and crawler crane associated with the main contract works undertaken by McLaughlin & Harvey Ltd and Pierse Contracting Ltd.



Stripping Armour from existing slopes ahead of piling works



Removing sleech ahead of infilling on reclaimed land.

ASHLEIGH CONTRACTS

30c Ballygelagh Road, Kircubbin, Newtownards, Co. Down BT22 1AE
Tel: 028 4277 2781 Fax: 028 4277 2685