



North Breakwater Construction, Aberdeen Harbour Expansion Project

Contract Value: £7.1m to £9.0m
Consulting Engineer: Doig + Smith (Project Managers)
Engineer's Representative: PM – Mr Douglas Fairley (07764 663481)
Client: Dragados UK Ltd
Client's Representative: Mr Jose Luis Manso (07785 409434)
Works completed: Nov 2019

Scope of the Works:

Ashleigh Contracts were appointed in March 2018 as specialist marine Subcontractors working for Dragados UK Ltd to continue with and complete the last 440m of North Breakwater construction following Dragados' commencing of the initial circa 200m of the Breakwater in 2017.

Ashleigh's works commenced on site in March 2018 and were completed in November 2019 with approx. 440m of the deep-water section of the North Breakwater in water depths ranging from -5m CD to -10mCD successfully completed comprising the following elements:-

- The placement of 340,000T of imported Core Material for the core of the Breakwater including stockpiling and double-handling approx. 200,000T of this material to accelerate and make construction operations significantly more efficient.
- Stockpiling of 145,000T of Rock Armour imported from Norway in 1-3T, 2-5T and 3-6T Gradings.
- Placement of 40,000m³ of 1-3T Rock Armour as underlayer to the seaward slopes and as temporary armour to the inshore slopes of the Breakwater.
- Placement of 8,000m³ of Bedding Material (60-300Kg) as scour protection to the seaward face of the Breakwater with the Inner 50% placed by Long Reach excavators from the shore and the Outer 50% placed from a spudleg Barge.
- Construction of a Toe Mound comprising 3-6T Armour at the base of the slopes – requiring accurate formation of the Inner face using the Prolec PCX system to form the foundation for the Primary Armouring Units
- Placement of 2,100No 8m³ (20T) Accropode Primary Armouring Units along the seaward face of the Breakwater and extending around the Roundhead. Accurate underwater placement of Accropodes was achieved using a combination of Prolec PCX for positioning and live 3D sonar Echoscope imagery for effective interlocking – all without a requirement to deploy divers.

Additional works were undertaken including:-

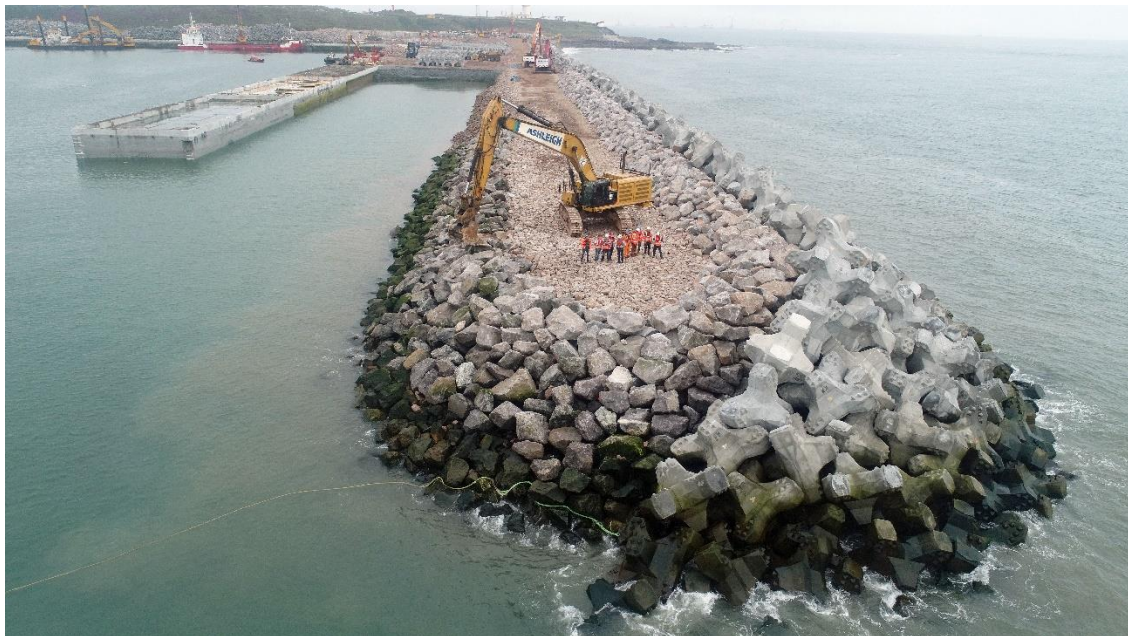
- Repairs to storm damage suffered by the Breakwater during major storm events of November & December 2018.
- Placement & Removal of temporary protection measures including a Winter Closure in December 2018.
- Miscellaneous Plant Hire

ASHLEIGH CONTRACTS

30c Ballygelagh Road, Kircubbin, Newtownards, Co. Down BT22 1AE
Tel: 028 4277 2781 Fax: 028 4277 2685 Email: info@ashleighcontracts.com www.ashleighcontracts.com



Ashleigh's Hitachi EX1200XXL (220T Excavator) preparing to lift and place a 20T Accropode Unit



Ashleigh's North Breakwater team marking the completion of construction of the North Breakwater from Ch. 400m to Ch. 0m at the Roundhead in July 2019

ASHLEIGH CONTRACTS

30c Ballygelagh Road, Kircubbin, Newtownards, Co. Down BT22 1AE
Tel: 028 4277 2781 Fax: 028 4277 2685 Email: info@ashleighcontracts.com www.ashleighcontracts.com